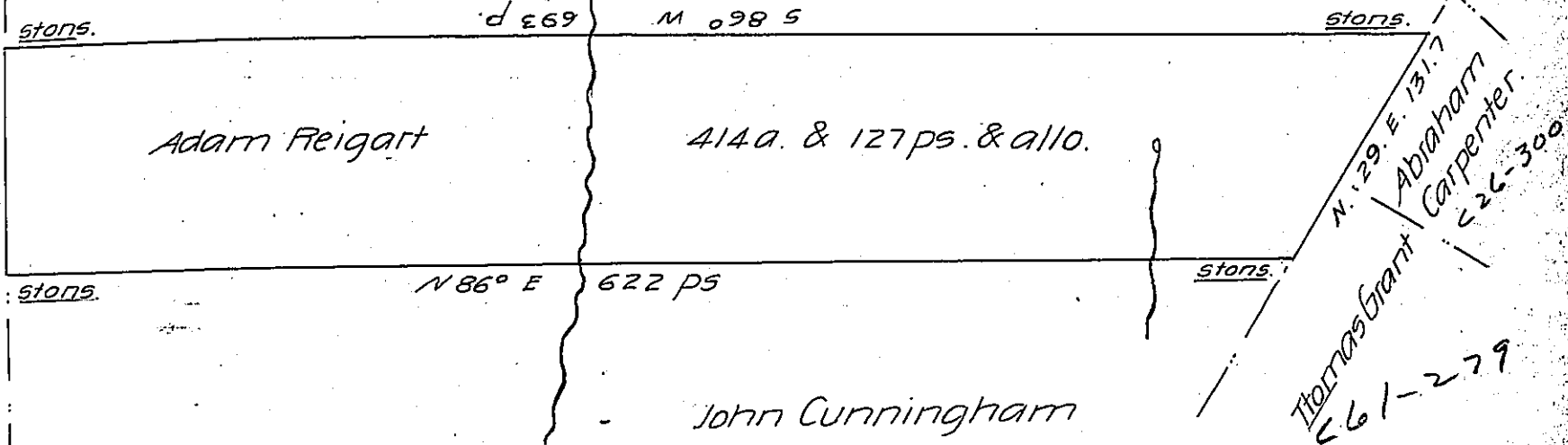


FORM No. 1.

County  
Franklin County  
Line

John Greaff.



Situated in Franklin Township York County and Surveyed November 1795 in pursuance of a Warrant for 400a dated 3d March 1794

By Moses McClean D.S.

To Daniel Brodhead Esqr.

Surveyor General.

IN TESTIMONY that the above is a copy of the original remaining on file in the Department of Internal Affairs of Pennsylvania, made conformably to an Act of Assembly approved the 16th day of February, 1833, I have hereunto set my Hand and caused the Seal of said Department to be affixed at Harrisburg, this twentieth day of September 1906

*James D. Brown*  
Secretary of Internal Affairs.